

Power Supply Procurement Plan 2024

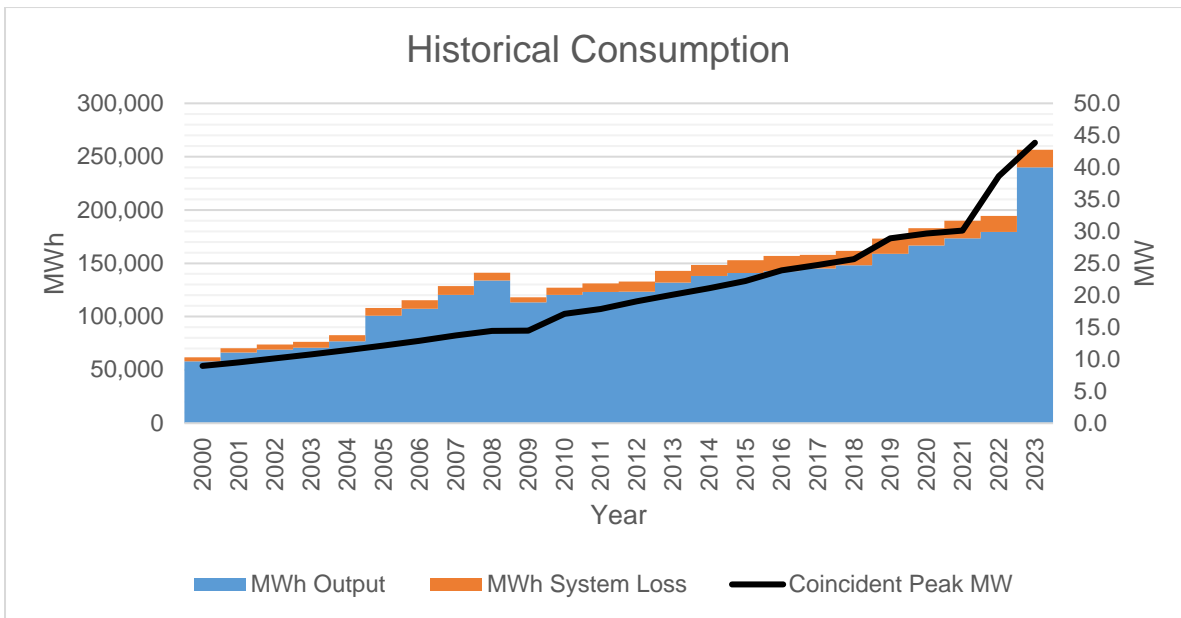
CEBU III ELECTRIC COOPERATIVE, INC.

(CEBECO III)

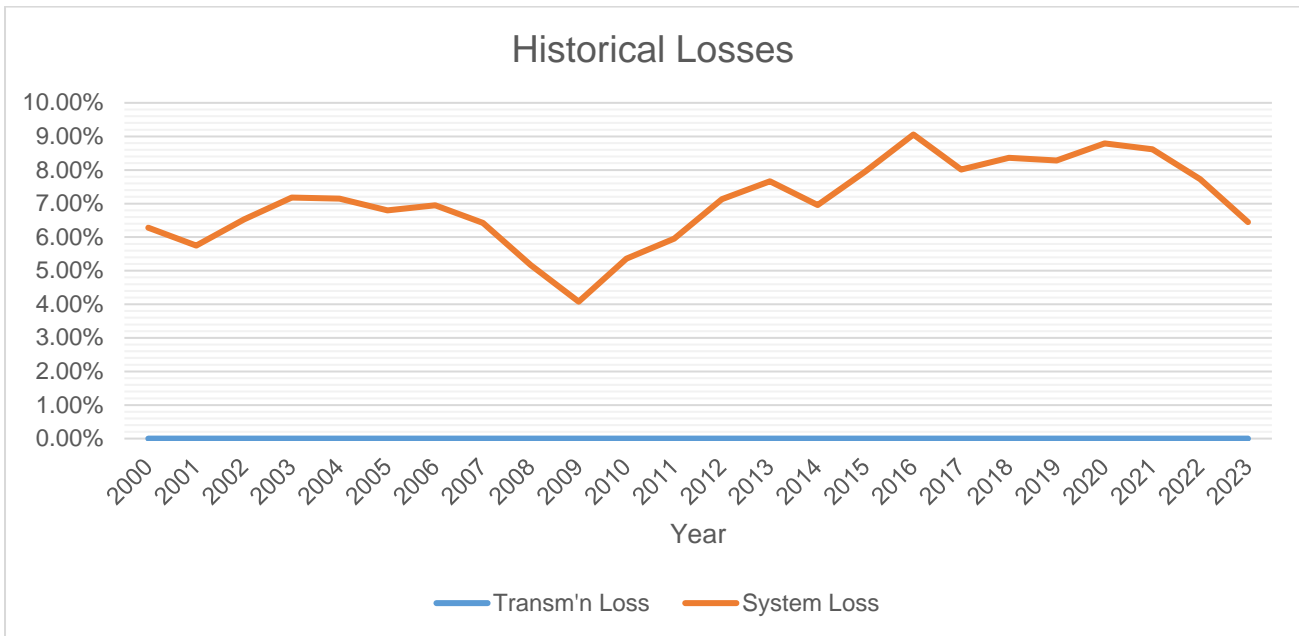
Historical Consumption Data

	Coincident Peak MW	MWh Offtake	WESM	MWh Input	MWh Output	MWh System Loss	Load Factor	Discrepancy	Transm'n Loss	System Loss
2000	8.96	61,839	0	61,839	57,957	3,883	79%	0.00%	0.00%	6.28%
2001	9.52	70,255	0	70,255	66,214	4,041	84%	0.00%	0.00%	5.75%
2002	10.12	73,842	0	73,842	69,024	4,817	83%	0.00%	0.00%	6.52%
2003	10.75	76,267	0	76,267	70,790	5,477	81%	0.00%	0.00%	7.18%
2004	11.42	82,638	0	82,638	76,733	5,905	83%	0.00%	0.00%	7.15%
2005	12.14	108,130	0	108,130	100,776	7,353	102%	0.00%	0.00%	6.80%
2006	12.90	115,436	0	115,436	107,410	8,026	102%	0.00%	0.00%	6.95%
2007	13.70	128,529	0	128,529	120,272	8,257	107%	0.00%	0.00%	6.42%
2008	14.42	141,177	0	141,177	133,875	7,303	112%	0.00%	0.00%	5.17%
2009	14.45	118,131	0	118,131	113,313	4,819	93%	0.00%	0.00%	4.08%
2010	17.08	127,097	0	127,097	120,285	6,813	85%	0.00%	0.00%	5.36%
2011	17.84	131,007	2,397	131,007	123,202	7,806	84%	0.00%	0.00%	5.96%
2012	19.07	132,922	2,019	132,922	123,448	9,475	80%	0.00%	0.00%	7.13%
2013	20.08	142,825	499	142,825	131,877	10,948	81%	0.00%	0.00%	7.67%
2014	21.11	148,337	1,088	148,337	138,020	10,317	80%	0.00%	0.00%	6.96%
2015	22.23	152,965	1,926	152,965	140,789	12,176	79%	0.00%	0.00%	7.96%
2016	23.89	156,810	5,213	156,810	142,607	14,202	75%	0.00%	0.00%	9.06%
2017	24.71	157,872	4,826	157,872	145,228	12,644	73%	0.00%	0.00%	8.01%
2018	25.63	161,745	9,341	161,745	148,223	13,522	72%	0.00%	0.00%	8.36%
2019	28.91	173,222	15,182	173,222	158,879	14,343	68%	0.00%	0.00%	8.28%
2020	29.67	182,831	28,142	182,831	166,752	16,079	70%	0.00%	0.00%	8.79%
2021	30.09	189,819	26,184	189,819	173,467	16,352	72%	0.00%	0.00%	8.61%
2022	38.63	194,420	33,299	194,420	179,398	15,022	57%	0.00%	0.00%	7.73%
2023	43.85	256,526	55,755	256,526	239,979	16,547	67%	0.00%	0.00%	6.45%

Peak Demand increased from 38.63 MW in 2022 to 43.85 MW in 2023 at a rate of 13.51% due to the increased power requirement of Century Peak Cement Manufacturing Corporation. MWh Offtake increased from 194,420 MWh in 2022 to 256,526 MWh in 2023 at a rate of 31.94% due to the same reason. Within the same period, Load Factor ranged from 57% to 67%. There was an abrupt change in consumption in 2023 due to the commercial operation of CPCMC.

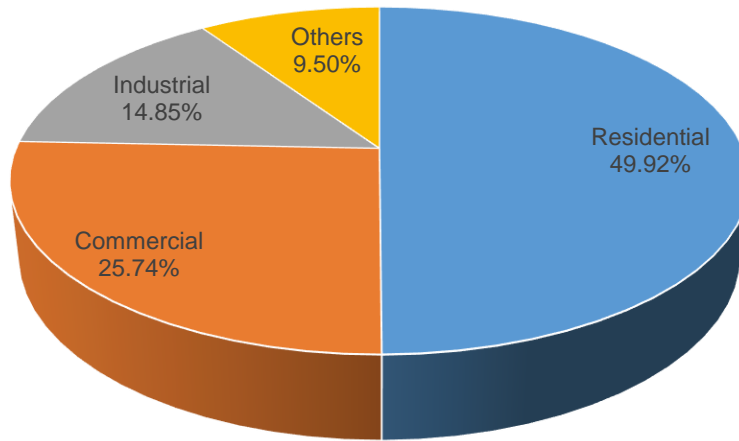


MWh Output increased from year 2022 to year 2023 at a rate of 33.77%, while MWh System Loss decreased at a rate of 16.56% within the same period.



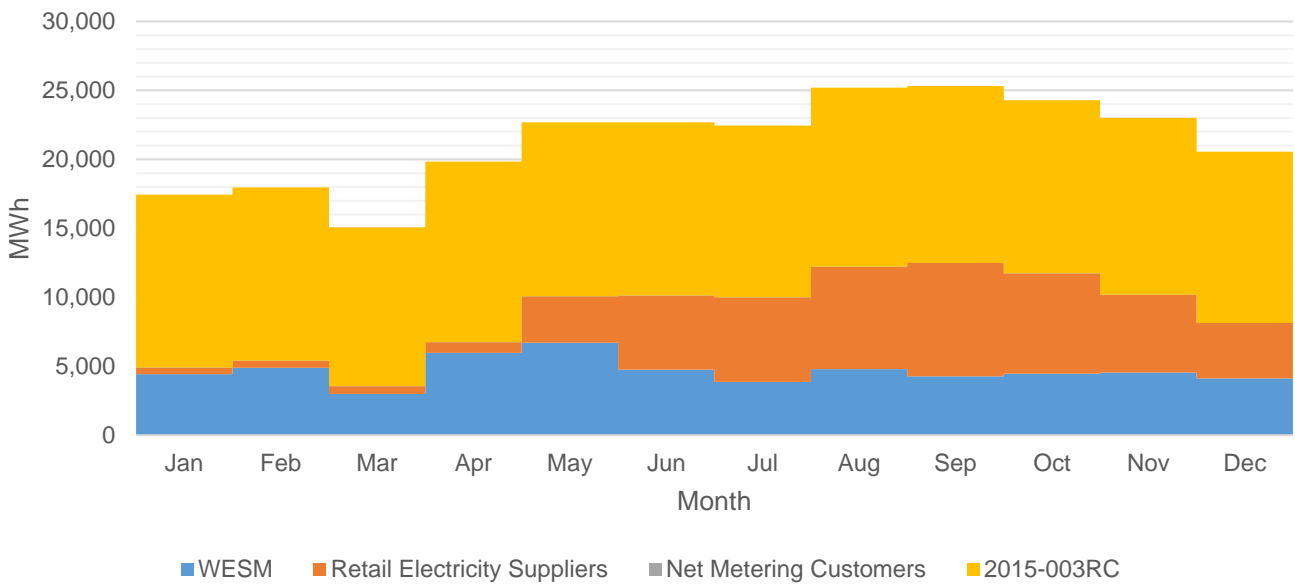
Historically System Loss ranged from 4.08% to 9.06%. CEBECO III has no Transmission Loss. System Loss peaked at 9.06% on year 2016 because of delayed implementation of CAPEX Projects.

Previous Year's Shares of Energy Sales

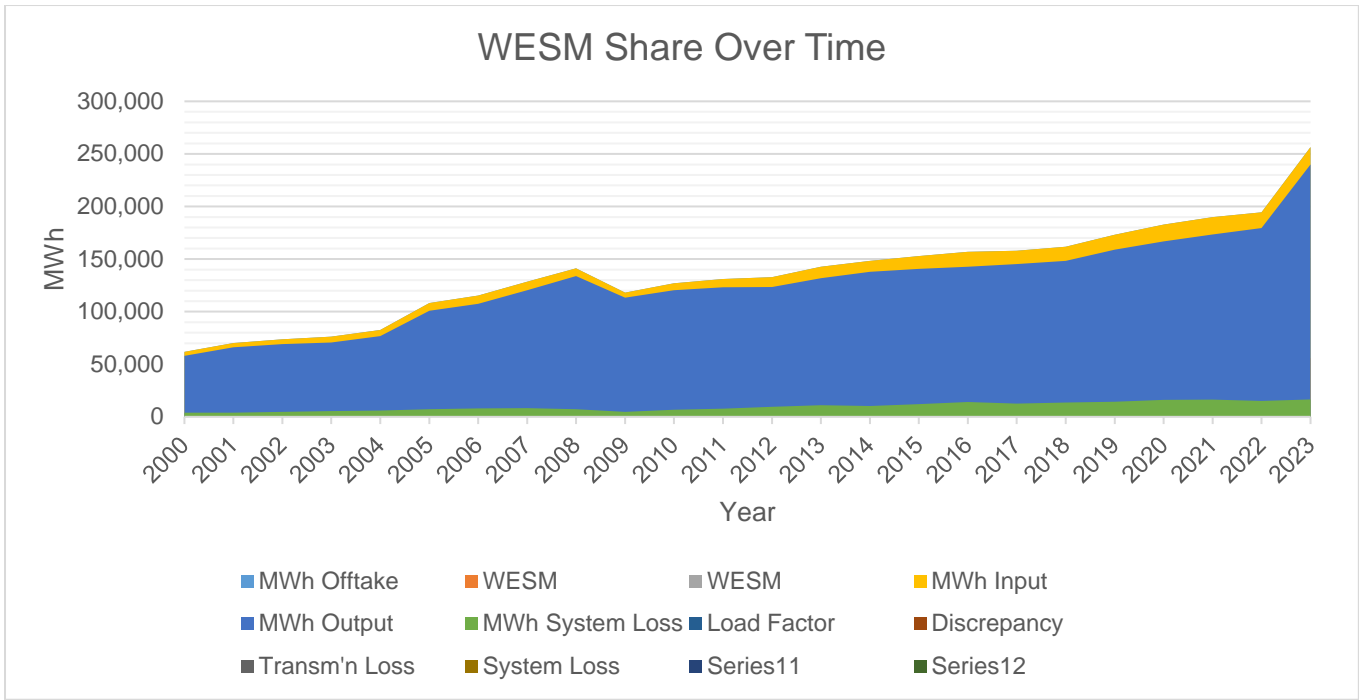


Residential customers account for the bulk of energy sales at 49.92% due to the high number of connections. In contrast, Others customers accounted for only 9.50% of energy sales due to the low number of connections.

MWh Offtake for Last Historical Year

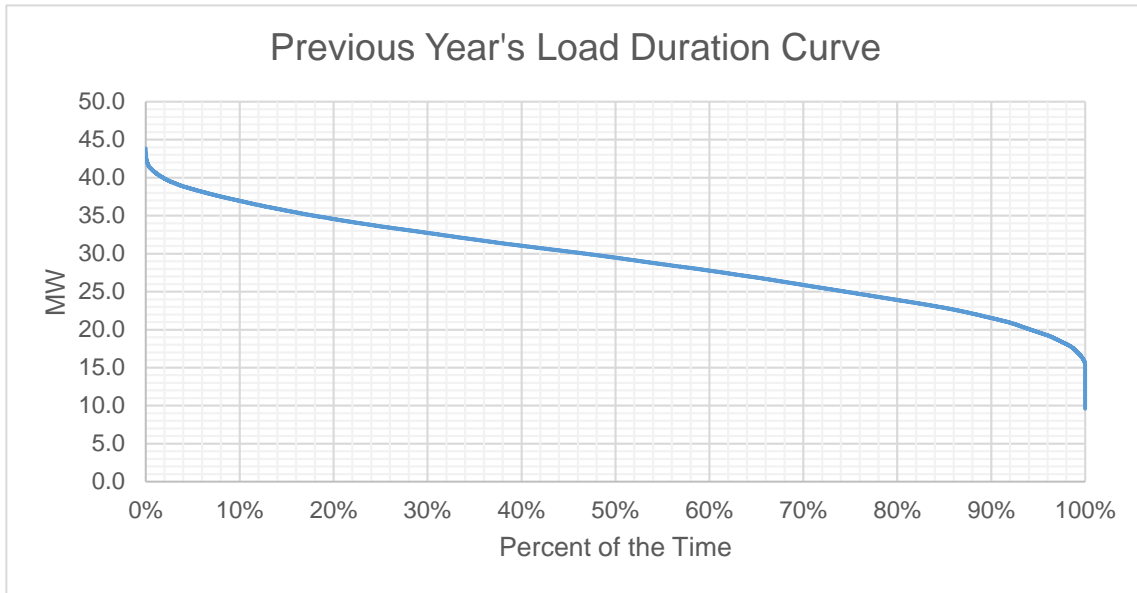


For 2023, the total Offtake for the last historical year is higher than the quantity stipulated in the PSA. The PSA with Toledo Power Company accounts for the bulk of MWh Offtake.

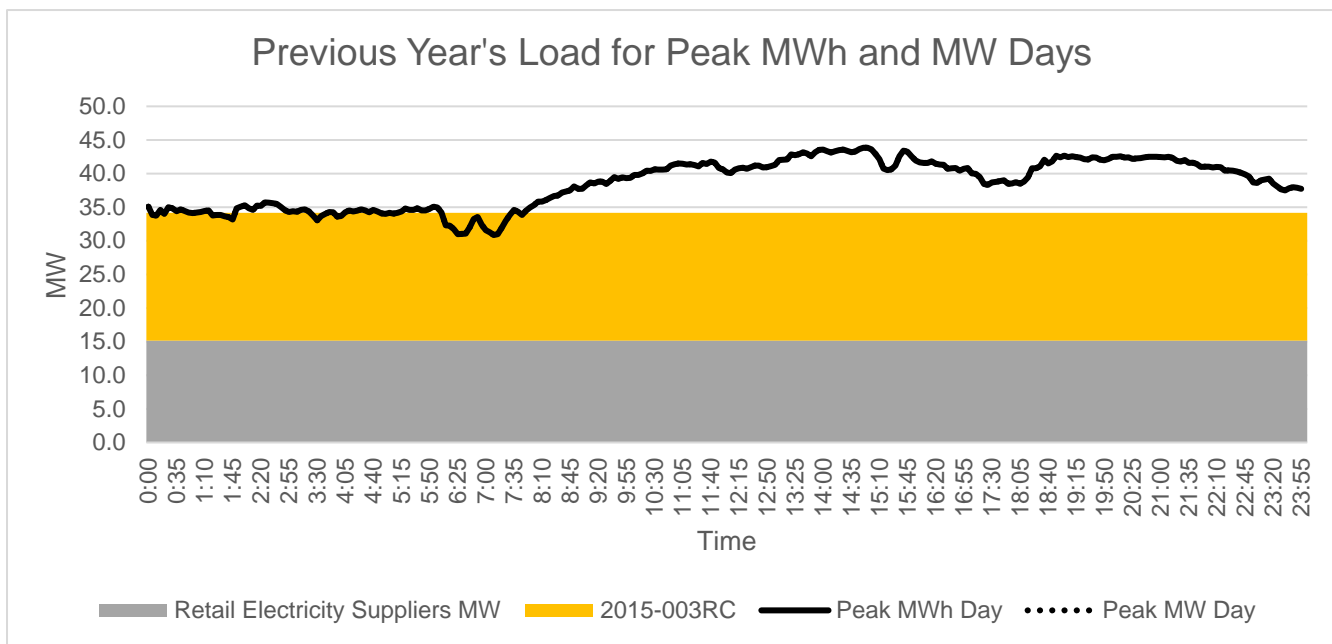


WESM Offtake increased from 33,299 MWh in 2022 to 55,755 MWh in 2023 at a rate of 64.43% due to CPCMC's late migration to RES as an RCOA customer. The share of WESM in the total Offtake ranged from 17.13% to 21.73%.

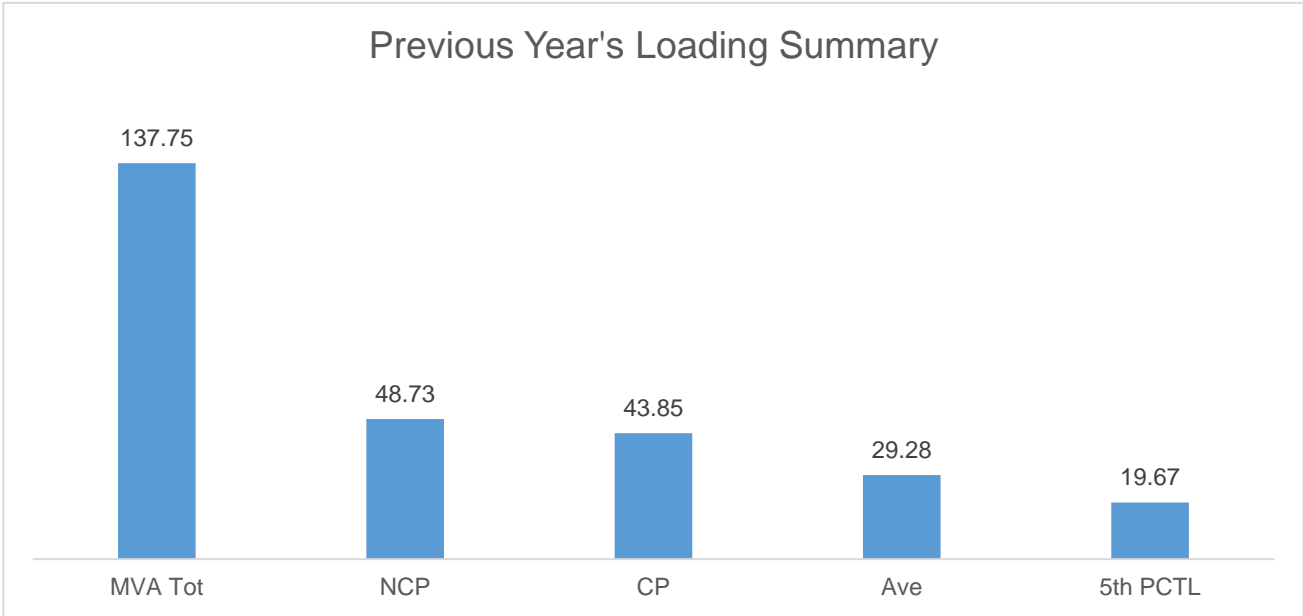
Previous Year's Load Profile



Based on the Load Duration Curve, the minimum load is 9.60 MW and the maximum load is 43.85 MW for the last historical year.



Peak MW occurred on August 8, 2023 at 2:55 PM due to the daytime operation of CPCMC. Peak daily MWh occurred on August 8, 2023 at 2:55 PM due to same reason. As shown in the Load Curves, the available supply is lower than the Peak Demand.



The Non-coincident Peak Demand is 48.73 MW, which is around 35.37% of the total substation capacity of 137.75 MVA at a power factor of 97%. The load factor or the ratio between the Average Load of 29.28 MW and the Non-coincident Peak Demand is 60.08% of. A safe estimate of the true minimum load is the fifth percentile load of 19.67 MW which is 40.36% of the Non-coincident Peak Demand.

Metering Point	Substation MVA	Substation Peak MW
Toledo-Lutopan Main Meter	37.5	15.64
Balamban Substation	12.5	8.02
Pinamungajan Substation	12.5	4.93
Asturias Substation	6.25	5.22
CPC-Alink Main Meter	69	14.92

The substations loaded at above 70% is Asturias Substation. This loading problem will be solved by 2024.

Forecasted Consumption Data

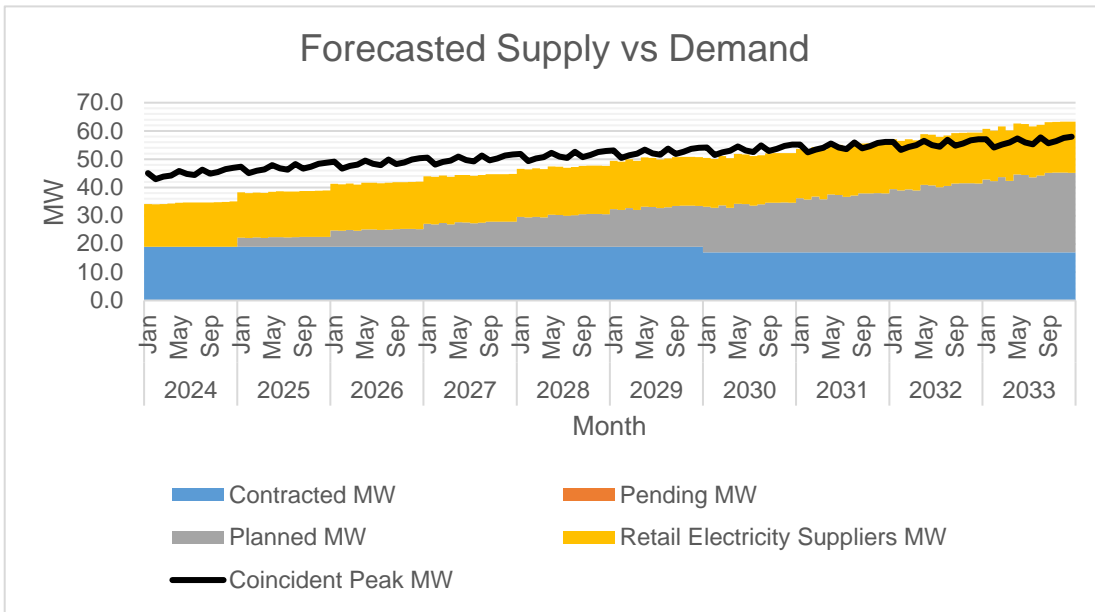
		Coincident Peak MW	Contracted MW	Pending MW	Planned MW	Retail Electricity Suppliers MW	Existing Contracting Level	Target Contracting Level	MW Surplus / Deficit
2024	Jan	45.06	19.00	0.00	0.000	15.16	64%	64%	-10.91
	Feb	42.95	19.00	0.00	0.000	15.03	68%	68%	-8.92
	Mar	43.83	19.00	0.00	0.000	15.11	66%	66%	-9.72
	Apr	44.27	19.00	0.00	0.000	15.28	66%	66%	-9.99
	May	45.79	19.00	0.00	0.000	15.55	63%	63%	-11.24
	Jun	44.76	19.00	0.00	0.000	15.73	65%	65%	-10.03
	Jul	44.37	19.00	0.00	0.000	15.73	66%	66%	-9.64
	Aug	46.33	19.00	0.00	0.000	15.68	62%	62%	-11.65
	Sep	44.84	19.00	0.00	0.000	15.67	65%	65%	-10.17
	Oct	45.46	19.00	0.00	0.000	15.77	64%	64%	-10.69
	Nov	46.48	19.00	0.00	0.000	15.90	62%	62%	-11.58
	Dec	46.96	19.00	0.00	0.000	16.04	61%	61%	-11.91
2025	Jan	47.37	19.00	0.00	3.206	16.03	61%	71%	-9.13
	Feb	45.09	19.00	0.00	3.137	15.90	65%	76%	-7.05
	Mar	45.95	19.00	0.00	3.311	15.88	63%	74%	-7.76
	Apr	46.39	19.00	0.00	3.140	15.92	62%	73%	-8.33
	May	47.87	19.00	0.00	3.428	16.08	60%	71%	-9.36
	Jun	46.75	19.00	0.00	3.401	16.22	62%	73%	-8.13
	Jul	46.30	19.00	0.00	3.297	16.24	63%	74%	-7.77
	Aug	48.30	19.00	0.00	3.376	16.22	59%	70%	-9.70
	Sep	46.71	19.00	0.00	3.491	16.22	62%	74%	-8.00
	Oct	47.33	19.00	0.00	3.501	16.26	61%	72%	-8.57
	Nov	48.34	19.00	0.00	3.504	16.33	59%	70%	-9.50
	Dec	48.79	19.00	0.00	3.492	16.47	59%	70%	-9.83
2026	Jan	49.10	19.00	0.00	5.779	16.52	58%	76%	-7.81
	Feb	46.73	19.00	0.00	5.654	16.44	63%	81%	-5.63
	Mar	47.59	19.00	0.00	5.968	16.41	61%	80%	-6.21
	Apr	48.06	19.00	0.00	5.661	16.36	60%	78%	-7.04
	May	49.53	19.00	0.00	6.179	16.47	57%	76%	-7.88

	Jun	48.34	19.00	0.00	6.130	16.55	60%	79%	-6.67
	Jul	47.87	19.00	0.00	5.942	16.56	61%	80%	-6.37
	Aug	49.92	19.00	0.00	6.085	16.56	57%	75%	-8.27
	Sep	48.24	19.00	0.00	6.292	16.57	60%	80%	-6.38
	Oct	48.87	19.00	0.00	6.311	16.58	59%	78%	-6.98
	Nov	49.89	19.00	0.00	6.315	16.61	57%	76%	-7.96
	Dec	50.33	19.00	0.00	6.294	16.73	57%	75%	-8.31
2027	Jan	50.57	19.00	0.00	8.125	16.79	56%	80%	-6.65
	Feb	48.11	19.00	0.00	7.950	16.80	61%	86%	-4.36
	Mar	49.00	19.00	0.00	8.393	16.84	59%	85%	-4.77
	Apr	49.50	19.00	0.00	7.960	16.75	58%	82%	-5.79
	May	50.96	19.00	0.00	8.689	16.77	56%	81%	-6.50
	Jun	49.72	19.00	0.00	8.619	16.83	58%	84%	-5.27
	Jul	49.22	19.00	0.00	8.356	16.81	59%	84%	-5.06
	Aug	51.34	19.00	0.00	8.556	16.83	55%	80%	-6.96
	Sep	49.58	19.00	0.00	8.847	16.85	58%	85%	-4.88
	Oct	50.23	19.00	0.00	8.874	16.85	57%	83%	-5.51
	Nov	51.26	19.00	0.00	8.880	16.84	55%	81%	-6.54
	Dec	51.70	19.00	0.00	8.850	16.91	55%	80%	-6.94
2028	Jan	51.88	19.00	0.00	10.629	16.97	54%	85%	-5.28
	Feb	49.33	19.00	0.00	10.400	17.00	59%	91%	-2.93
	Mar	50.24	19.00	0.00	10.600	17.13	57%	89%	-3.51
	Apr	50.78	19.00	0.00	10.412	17.10	56%	87%	-4.27
	May	52.25	19.00	0.00	11.365	17.08	54%	86%	-4.80
	Jun	50.96	19.00	0.00	11.274	17.07	56%	89%	-3.62
	Jul	50.44	19.00	0.00	10.930	17.04	57%	90%	-3.47
	Aug	52.62	19.00	0.00	11.192	17.05	53%	85%	-5.38
	Sep	50.78	19.00	0.00	11.573	17.09	56%	91%	-3.12
	Oct	51.46	19.00	0.00	11.608	17.10	55%	89%	-3.75
	Nov	52.50	19.00	0.00	11.616	17.06	54%	86%	-4.83
	Dec	52.93	19.00	0.00	11.576	17.09	53%	85%	-5.27
2029	Jan	53.06	19.00	0.00	13.298	17.11	53%	90%	-3.65
	Feb	50.44	19.00	0.00	13.011	17.13	57%	96%	-1.30
	Mar	51.38	19.00	0.00	13.735	17.29	56%	96%	-1.35
	Apr	51.95	19.00	0.00	13.026	17.36	55%	93%	-2.57

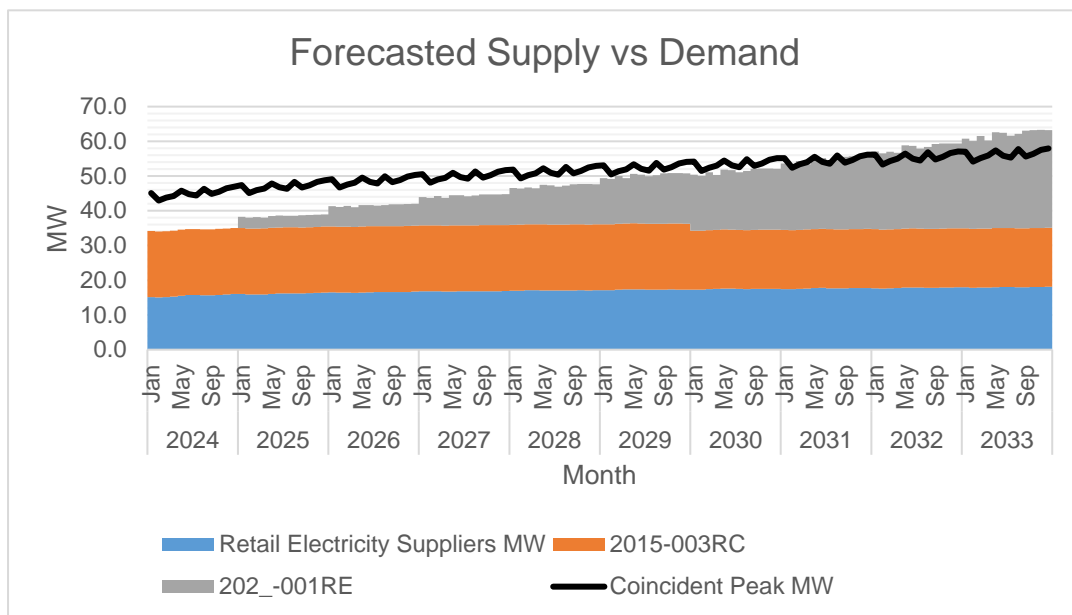
	May	53.42	19.00	0.00	14.219	17.39	53%	92%	-2.81
	Jun	52.08	19.00	0.00	14.106	17.33	55%	95%	-1.65
	Jul	51.55	19.00	0.00	13.675	17.24	55%	95%	-1.63
	Aug	53.79	19.00	0.00	14.003	17.25	52%	90%	-3.53
	Sep	51.89	19.00	0.00	14.479	17.29	55%	97%	-1.11
	Oct	52.59	19.00	0.00	14.523	17.33	54%	95%	-1.73
	Nov	53.65	19.00	0.00	14.533	17.31	52%	92%	-2.81
	Dec	54.07	19.00	0.00	14.483	17.30	52%	91%	-3.29
2030	Jan	54.15	17.00	0.00	16.143	17.27	46%	90%	-3.74
	Feb	51.46	17.00	0.00	15.795	17.25	50%	96%	-1.41
	Mar	52.42	17.00	0.00	16.674	17.41	49%	96%	-1.34
	Apr	53.04	17.00	0.00	15.814	17.50	48%	92%	-2.72
	May	54.50	17.00	0.00	17.262	17.61	46%	93%	-2.63
	Jun	53.13	17.00	0.00	17.124	17.60	48%	96%	-1.41
	Jul	52.58	17.00	0.00	16.601	17.47	48%	96%	-1.50
	Aug	54.88	17.00	0.00	16.999	17.44	45%	91%	-3.44
	Sep	52.91	17.00	0.00	17.577	17.49	48%	98%	-0.85
	Oct	53.63	17.00	0.00	17.631	17.54	47%	96%	-1.46
	Nov	54.71	17.00	0.00	17.643	17.54	46%	93%	-2.53
	Dec	55.13	17.00	0.00	17.582	17.54	45%	92%	-3.02
2031	Jan	55.17	17.00	0.00	19.174	17.47	45%	96%	-1.53
	Feb	52.41	17.00	0.00	18.761	17.40	49%	102%	0.75
	Mar	53.40	17.00	0.00	19.804	17.53	47%	103%	0.93
	Apr	54.05	17.00	0.00	18.783	17.62	47%	98%	-0.65
	May	55.52	17.00	0.00	20.503	17.75	45%	99%	-0.27
	Jun	54.10	17.00	0.00	20.339	17.79	47%	103%	1.02
	Jul	53.54	17.00	0.00	19.718	17.70	47%	102%	0.88
	Aug	55.89	17.00	0.00	20.191	17.65	44%	97%	-1.06
	Sep	53.87	17.00	0.00	20.878	17.67	47%	105%	1.68
	Oct	54.61	17.00	0.00	20.941	17.73	46%	103%	1.06
	Nov	55.70	17.00	0.00	20.955	17.75	45%	100%	0.00
	Dec	56.13	17.00	0.00	20.883	17.77	44%	99%	-0.47
2032	Jan	56.13	17.00	0.00	22.402	17.70	44%	103%	0.98
	Feb	53.31	17.00	0.00	21.919	17.60	48%	109%	3.21
	Mar	54.32	17.00	0.00	22.340	17.68	46%	107%	2.70

	Apr	55.00	17.00	0.00	21.944	17.74	46%	105%	1.69
	May	56.47	17.00	0.00	23.954	17.87	44%	106%	2.35
	Jun	55.02	17.00	0.00	23.762	17.93	46%	110%	3.67
	Jul	54.45	17.00	0.00	23.037	17.87	46%	109%	3.46
	Aug	56.85	17.00	0.00	23.589	17.82	44%	104%	1.56
	Sep	54.77	17.00	0.00	24.392	17.84	46%	112%	4.46
	Oct	55.54	17.00	0.00	24.466	17.89	45%	110%	3.82
	Nov	56.64	17.00	0.00	24.483	17.93	44%	107%	2.77
	Dec	57.07	17.00	0.00	24.399	17.98	43%	106%	2.31
2033	Jan	57.03	17.00	0.00	25.837	17.93	43%	110%	3.74
	Feb	54.15	17.00	0.00	25.280	17.82	47%	116%	5.95
	Mar	55.19	17.00	0.00	26.686	17.87	46%	117%	6.37
	Apr	55.90	17.00	0.00	25.310	17.90	45%	111%	4.31
	May	57.37	17.00	0.00	27.628	18.01	43%	113%	5.26
	Jun	55.89	17.00	0.00	27.407	18.06	45%	117%	6.58
	Jul	55.30	17.00	0.00	26.570	18.02	46%	117%	6.28
	Aug	57.76	17.00	0.00	27.207	17.98	43%	111%	4.42
	Sep	55.63	17.00	0.00	28.133	17.98	45%	120%	7.48
	Oct	56.41	17.00	0.00	28.218	18.02	44%	118%	6.82
	Nov	57.53	17.00	0.00	28.237	18.05	43%	115%	5.76
	Dec	57.96	17.00	0.00	28.140	18.13	43%	113%	5.31

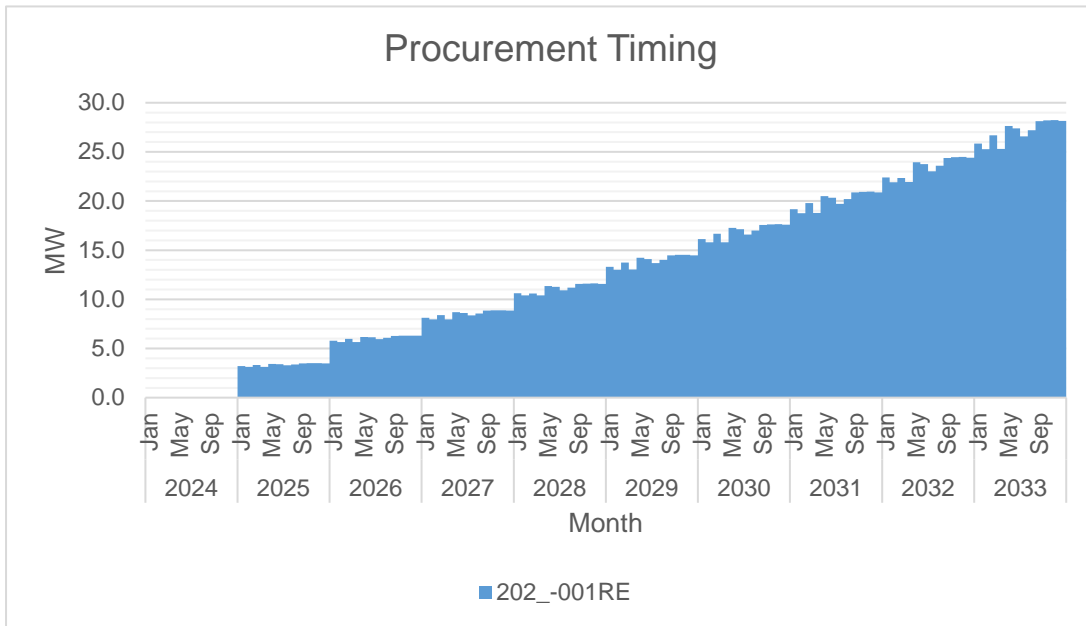
The Peak Demand was forecasted using Polynomial Regression and was assumed to occur on the month of December due to the Christmas Season. Monthly Peak Demand is at its lowest on the month of February due to low economic activities. In general, Peak Demand is expected to grow at a rate of 2.37% annually.



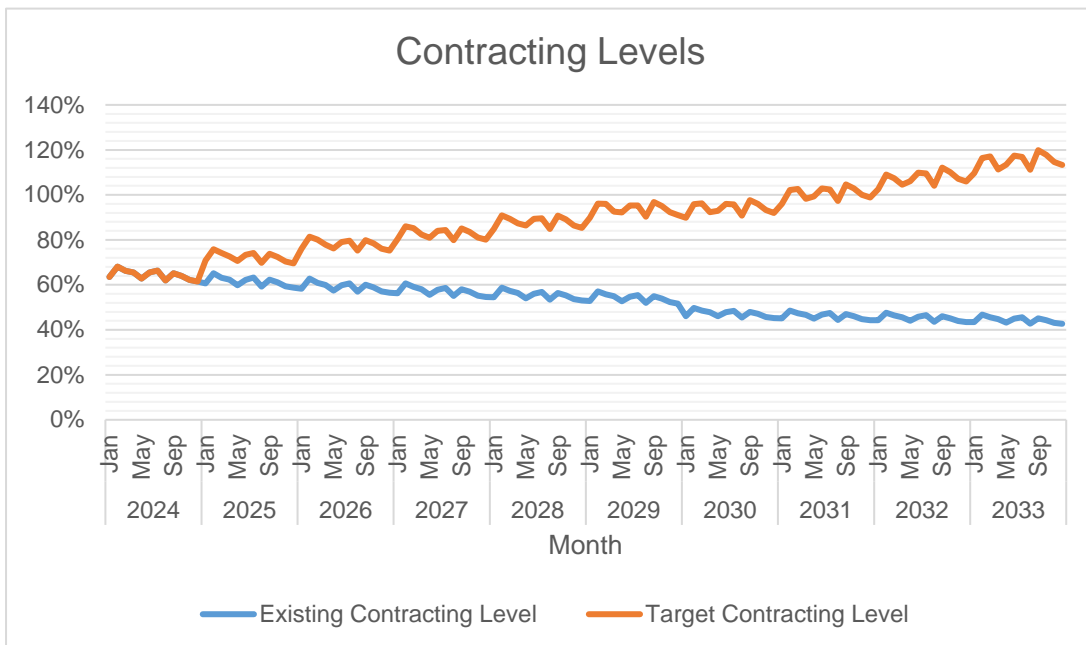
The available supply is generally above the Peak Demand. This is because the additional supply to fulfil the RPS requirement will add up to the existing PSA which could possibly result to stranded contract cost.



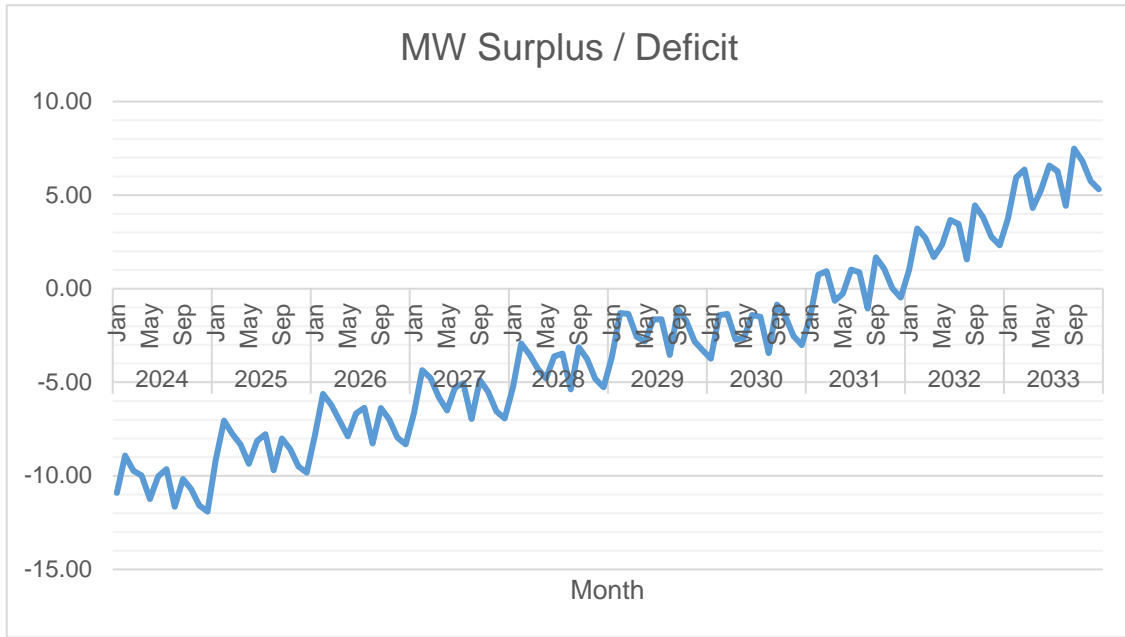
Of the available forecasted supply, the largest is 28.24 MW from 2025-001RE. This is followed by 19 MW from 2015-003RC which is our independent power provider Toledo Power Company and 18.13 MW from Retail Electricity Suppliers.



The first wave of supply procurement will be for 3.21 MW planned to be available by the month of January 2025. The supply procurement will be such that it will have provisions for annual increment depending on the forecasted need of CEBECO III.



Currently, there is under-contracting by 24.21%. The highest target contracting level is 120% which is expected to occur on September 2033. The lowest target contracting level is 61% which is expected to occur on December 2024.



Currently, there is under-contracting by 10.91 MW. The highest surplus is 7.48 MW which is expected to occur on the month of September 2033. The lowest surplus is 0.75 MW which is expected to occur on the month of February 2031.

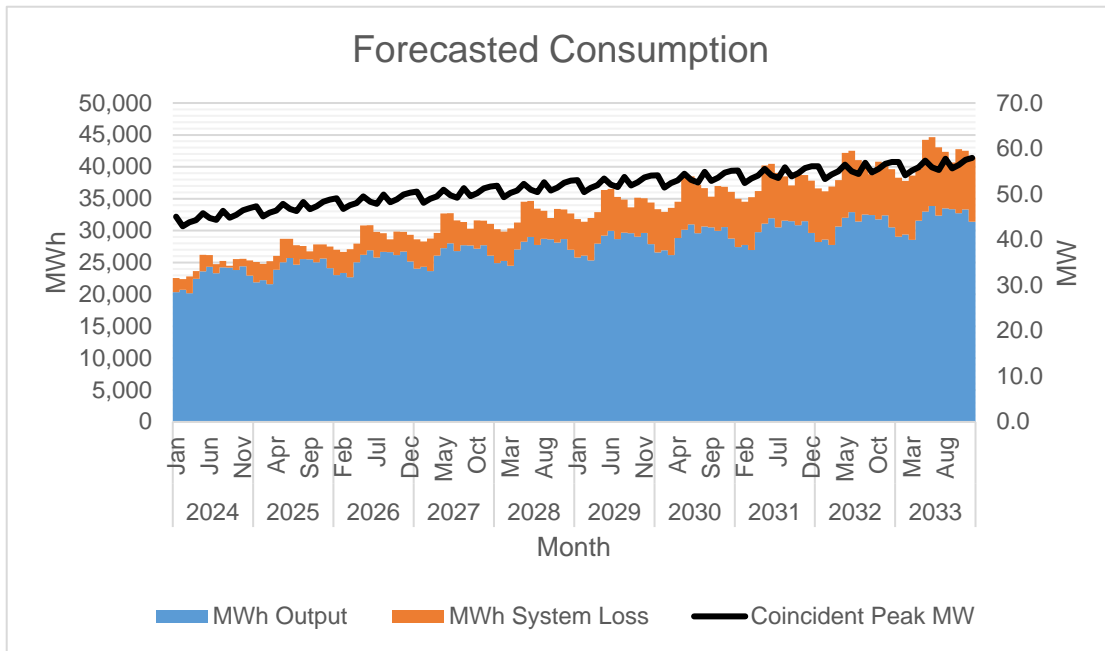
		MWh Offtake	MWh Output	MWh System Loss	Transm'n Loss	System Loss
2024	Jan	22,561	20,339	2,222	0.00%	9.85%
	Feb	22,377	20,717	1,660	0.00%	7.42%
	Mar	22,824	20,175	2,649	0.00%	11.61%
	Apr	23,656	22,425	1,231	0.00%	5.20%
	May	26,194	23,595	2,599	0.00%	9.92%
	Jun	26,168	24,312	1,856	0.00%	7.09%
	Jul	24,756	23,319	1,437	0.00%	5.80%
	Aug	25,239	24,216	1,023	0.00%	4.05%
	Sep	24,474	24,195	279	0.00%	1.14%
	Oct	25,526	23,815	1,710	0.00%	6.70%
	Nov	25,566	24,390	1,176	0.00%	4.60%
	Dec	25,307	22,955	2,352	0.00%	9.29%
2025	Jan	25,070	21,894	3,177	0.00%	12.67%
	Feb	24,796	22,210	2,586	0.00%	10.43%
	Mar	25,201	21,589	3,612	0.00%	14.33%
	Apr	26,029	23,864	2,165	0.00%	8.32%
	May	28,708	25,017	3,691	0.00%	12.86%
	Jun	28,693	25,715	2,978	0.00%	10.38%
	Jul	27,724	24,642	3,081	0.00%	11.11%
	Aug	27,585	25,530	2,055	0.00%	7.45%
	Sep	26,728	25,477	1,252	0.00%	4.68%
	Oct	27,832	25,048	2,784	0.00%	10.00%
	Nov	27,839	25,606	2,234	0.00%	8.02%
	Dec	27,483	24,104	3,379	0.00%	12.30%
2026	Jan	26,988	23,040	3,947	0.00%	14.63%

	Feb	26,674	23,345	3,329	0.00%	12.48%
	Mar	27,096	22,684	4,413	0.00%	16.29%
	Apr	27,947	25,029	2,918	0.00%	10.44%
	May	30,808	26,200	4,608	0.00%	14.96%
	Jun	30,830	26,907	3,923	0.00%	12.72%
	Jul	29,778	25,773	4,005	0.00%	13.45%
	Aug	29,575	26,678	2,897	0.00%	9.80%
	Sep	28,627	26,611	2,017	0.00%	7.04%
	Oct	29,819	26,146	3,673	0.00%	12.32%
	Nov	29,798	26,703	3,095	0.00%	10.39%
	Dec	29,357	25,141	4,216	0.00%	14.36%
2027	Jan	28,628	24,019	4,609	0.00%	16.10%
	Feb	28,287	24,323	3,964	0.00%	14.01%
	Mar	28,746	23,631	5,115	0.00%	17.79%
	Apr	29,621	26,058	3,563	0.00%	12.03%
	May	32,674	27,256	5,419	0.00%	16.58%
	Jun	32,739	27,981	4,758	0.00%	14.53%
	Jul	31,616	26,791	4,825	0.00%	15.26%
	Aug	31,349	27,721	3,628	0.00%	11.57%
	Sep	30,311	27,645	2,666	0.00%	8.80%
	Oct	31,604	27,150	4,453	0.00%	14.09%
	Nov	31,554	27,711	3,842	0.00%	12.18%
	Dec	31,036	26,093	4,943	0.00%	15.93%
2028	Jan	30,215	24,916	5,300	0.00%	17.54%
	Feb	29,851	25,224	4,626	0.00%	15.50%
	Mar	30,354	24,504	5,850	0.00%	19.27%
	Apr	31,257	27,020	4,237	0.00%	13.55%
	May	34,517	28,248	6,269	0.00%	18.16%
	Jun	34,631	28,996	5,634	0.00%	16.27%
	Jul	33,436	27,751	5,685	0.00%	17.00%
	Aug	33,104	28,709	4,395	0.00%	13.28%
	Sep	31,975	28,628	3,347	0.00%	10.47%
	Oct	33,377	28,105	5,272	0.00%	15.80%
	Nov	33,300	28,673	4,626	0.00%	13.89%
	Dec	32,704	27,000	5,704	0.00%	17.44%
2029	Jan	31,785	25,768	6,017	0.00%	18.93%
	Feb	31,398	26,084	5,314	0.00%	16.93%
	Mar	31,958	25,337	6,621	0.00%	20.72%
	Apr	32,887	27,945	4,942	0.00%	15.03%
	May	36,376	29,208	7,168	0.00%	19.70%
	Jun	36,542	29,981	6,561	0.00%	17.96%
	Jul	35,275	28,681	6,594	0.00%	18.69%
	Aug	34,871	29,670	5,202	0.00%	14.92%
	Sep	33,645	29,584	4,060	0.00%	12.07%
	Oct	35,170	29,033	6,136	0.00%	17.45%
	Nov	35,061	29,611	5,450	0.00%	15.55%
	Dec	34,384	27,882	6,502	0.00%	18.91%
2030	Jan	33,364	26,597	6,767	0.00%	20.28%
	Feb	32,954	26,920	6,034	0.00%	18.31%
	Mar	33,577	26,147	7,430	0.00%	22.13%
	Apr	34,533	28,853	5,681	0.00%	16.45%

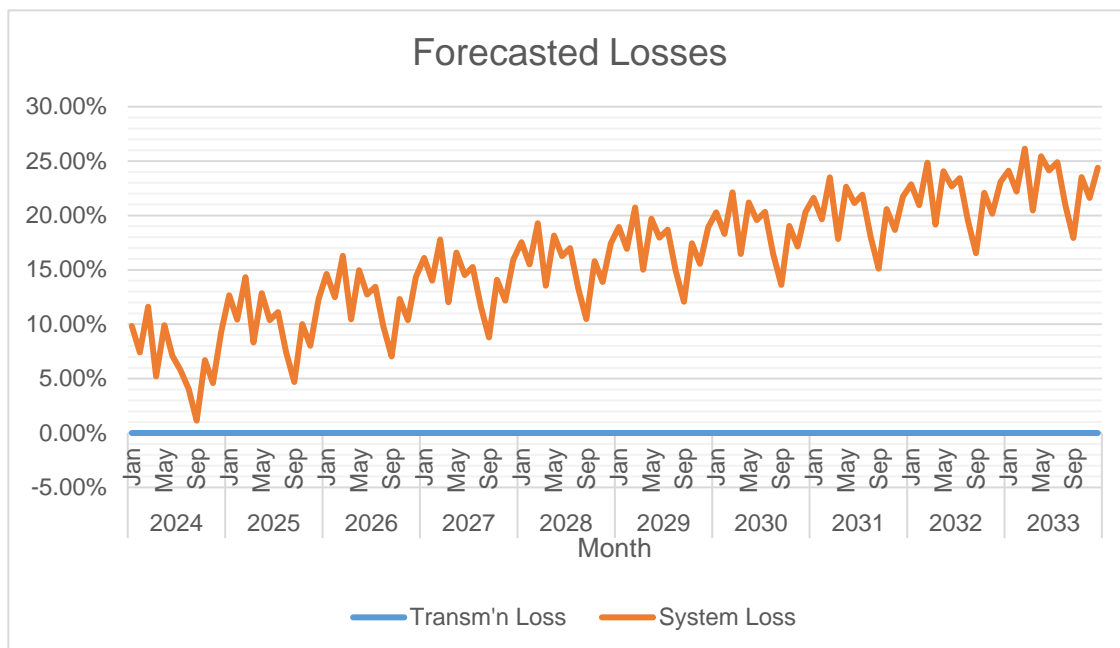
	May	38,264	30,152	8,113	0.00%	21.20%
	Jun	38,487	30,951	7,537	0.00%	19.58%
	Jul	37,146	29,596	7,550	0.00%	20.33%
	Aug	36,667	30,617	6,050	0.00%	16.50%
	Sep	35,338	30,529	4,810	0.00%	13.61%
	Oct	36,995	29,950	7,045	0.00%	19.04%
	Nov	36,854	30,538	6,317	0.00%	17.14%
	Dec	36,092	28,752	7,340	0.00%	20.34%
2031	Jan	34,968	27,414	7,554	0.00%	21.60%
	Feb	34,534	27,746	6,789	0.00%	19.66%
	Mar	35,224	26,947	8,277	0.00%	23.50%
	Apr	36,209	29,753	6,457	0.00%	17.83%
	May	40,193	31,090	9,104	0.00%	22.65%
	Jun	40,476	31,917	8,560	0.00%	21.15%
	Jul	39,058	30,506	8,552	0.00%	21.90%
	Aug	38,502	31,561	6,941	0.00%	18.03%
	Sep	37,069	31,470	5,599	0.00%	15.10%
	Oct	38,862	30,863	7,999	0.00%	20.58%
	Nov	38,689	31,462	7,227	0.00%	18.68%
	Dec	37,839	29,619	8,220	0.00%	21.72%
2032	Jan	36,597	28,227	8,371	0.00%	22.87%
	Feb	36,140	28,568	7,572	0.00%	20.95%
	Mar	36,912	27,743	9,168	0.00%	24.84%
	Apr	37,921	30,653	7,268	0.00%	19.17%
	May	42,185	32,030	10,155	0.00%	24.07%
	Jun	42,533	32,887	9,646	0.00%	22.68%
	Jul	41,034	31,419	9,615	0.00%	23.43%
	Aug	40,389	32,509	7,881	0.00%	19.51%
	Sep	38,840	32,416	6,425	0.00%	16.54%
	Oct	40,788	31,781	9,008	0.00%	22.08%
	Nov	40,576	32,391	8,185	0.00%	20.17%
	Dec	39,633	30,489	9,144	0.00%	23.07%
2033	Jan	38,268	29,042	9,226	0.00%	24.11%
	Feb	37,786	29,394	8,392	0.00%	22.21%
	Mar	38,643	28,542	10,101	0.00%	26.14%
	Apr	39,678	31,560	8,118	0.00%	20.46%
	May	44,234	32,979	11,255	0.00%	25.44%
	Jun	44,649	33,866	10,782	0.00%	24.15%
	Jul	43,066	32,339	10,727	0.00%	24.91%
	Aug	42,331	33,466	8,865	0.00%	20.94%
	Sep	40,663	33,371	7,292	0.00%	17.93%
	Oct	42,771	32,707	10,065	0.00%	23.53%
	Nov	42,520	33,330	9,190	0.00%	21.61%
	Dec	41,479	31,366	10,112	0.00%	24.38%

MWh Offtake was forecasted using Polynomial Regression. The assumed load factor is 85%.

System Loss was calculated through a Load Flow Study conducted monthly using Distribution System Analysis Software (DSAS) by PowerSolv, Inc. Based on the same study, the Distribution System can adequately convey electricity to customers.



MWh Output was expected to grow at an average rate of 3.66% annually.



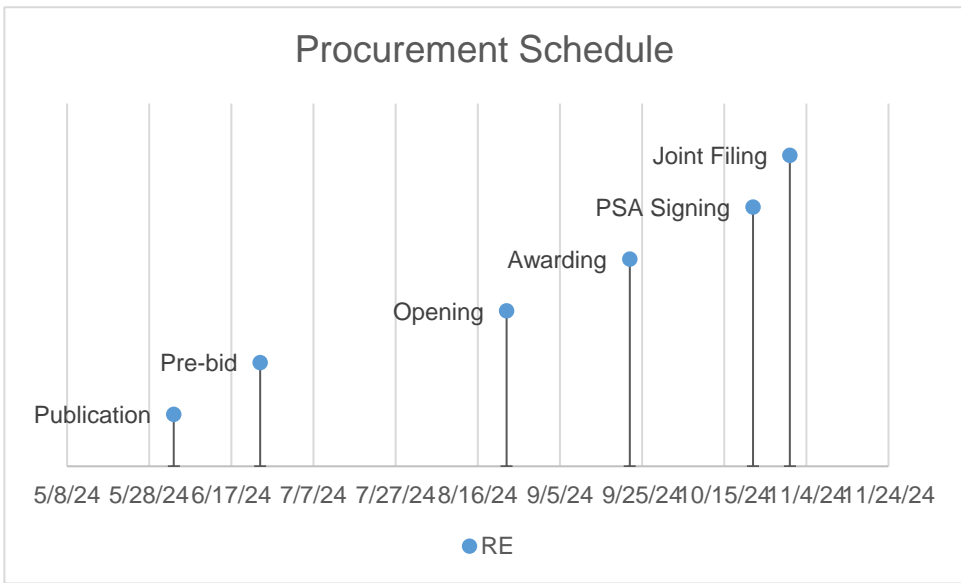
CEBECO III has no transmission loss as NGCP does not impose SSLA. System Loss is expected to range from 1.14% to 26.14%.

Power Supply

Case No.	Type	GenCo	Minimum MW	Minimum MWh/yr	PSA Start	PSA End
2015-003 RC	Base	Toledo Power Corporation	17.00	148,920	02/26/2015	02/25/2040

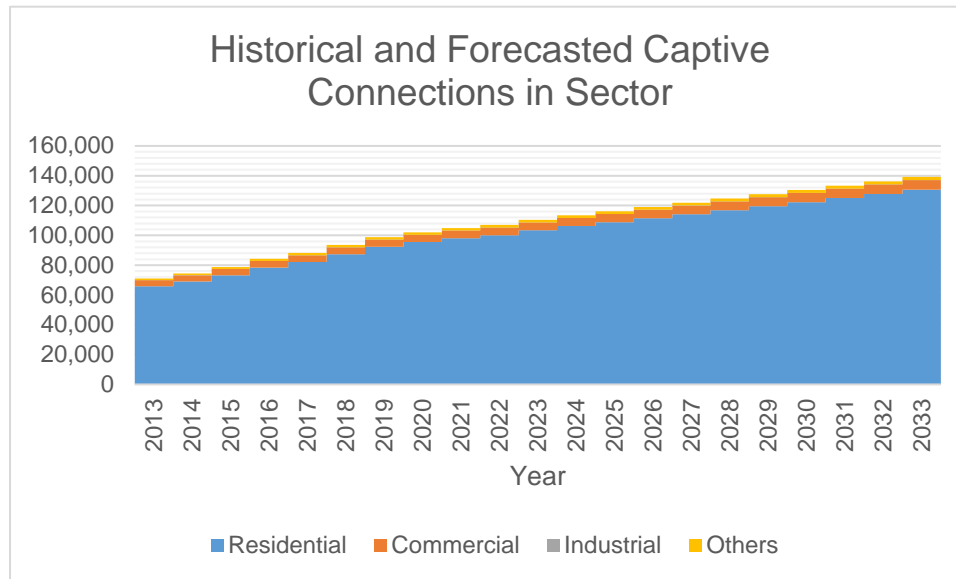
The PSA with Toledo Power Company filed with ERC under Case No. 2015-0003RC was procured through direct negotiation as the enforcement of CSP was only approved later. It was selected to provide for base requirements due to its practically reasonable cost. Historically, the utilization of the PSA is 100%. Outages of the plant led to minimal unserved energy in the past year. The actual billed overall monthly charge under the PSA ranged from 5.2694 P/kWh to 6.050 P/kWh in the same period.

	RE
Type	Intermediate
Minimum MW	3.14
Minimum MWh/yr	9,801
PSA Start	12/26/2024
PSA End	12/25/2033
Publication	6/3/2024
Pre-bid	6/24/2024
Opening	8/23/2024
Awarding	9/22/2024
PSA Signing	10/22/2024
Joint Filing	10/31/2024



For the procurement of 3.14 MW of supply which is planned to be available on January 2025, the first publication or launch of CSP will be on June 3, 2024. Joint filing is planned on October 31, 2024, or 150 days later, in accordance with ERC 2023 CSP Implementing Rules and NEA 2023 CSP Guidelines.

Captive Customer Connections



The number of residential connections is expected to grow at an average rate of 3.50% annually. Said customer class is expected to account for 49.92% of the total consumption.

Note:

- On year 2022 large load-AFCI was reclassified to Higher Voltage customer beginning January 2022.
- On year 2023 large load-BEZ was reclassified to Higher Voltage customer beginning January 2023 and is charged full charges for its kWh consumption from CEBECO III. BEZ continues to pay access fees for all energy usage not supplied by CEBECO III which revenue is recorded as DSM revenues.
- On year 2023 large load-CCC is no longer considered a customer by CEBECO III beginning January 2023. It pays access fees for all its kWh consumption which fees are recorded as other revenues in the records of CEBECO III.